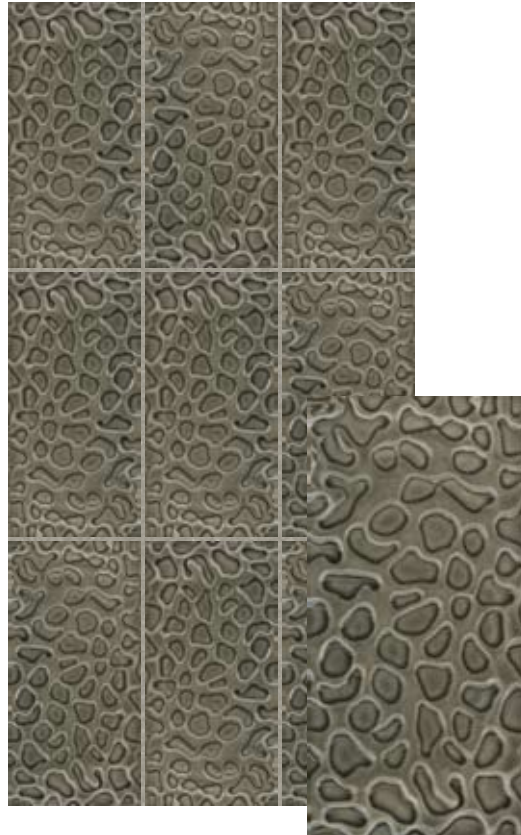




Artist Series:  
Naragon Collection



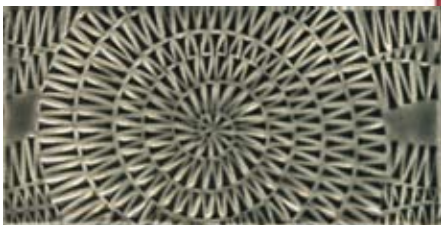
Gruvvee Liner 1 3" x 6" L120



Separation Liner 3" x 6" L122



Drip Drop Field 3" x 6" FD03060



Gruvvee Liner 2 3" x 6" L121



Gruvvee Accent 3" x 3" A11



Mini Ziggy Liner 3" x 6" L114



Mini Ziggy Accent 3" x 3" A12

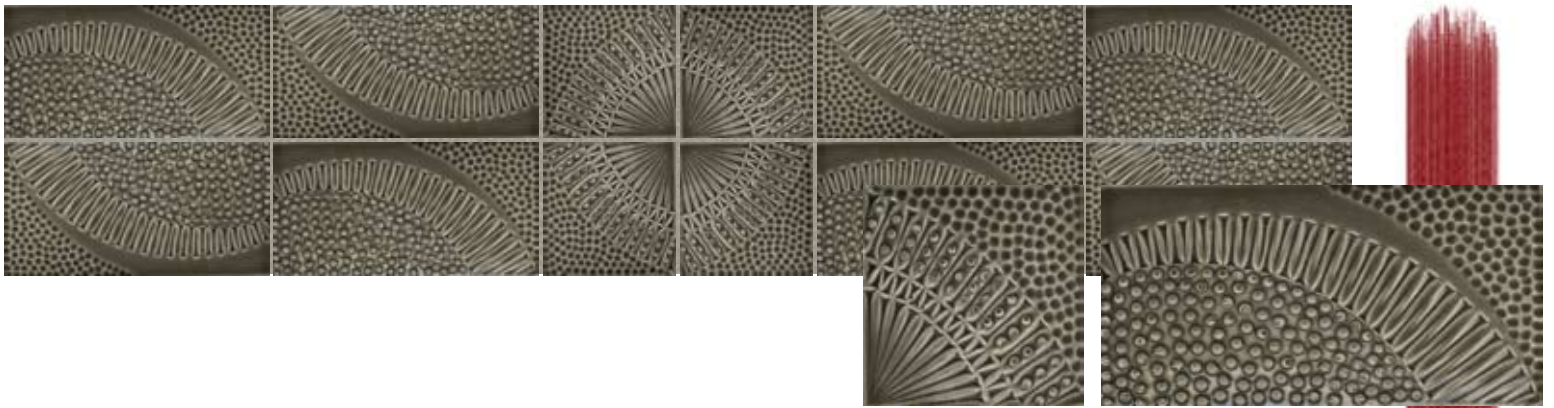


Big Zig Liner 3" x 6" L115



Big Zig Accent 3" x 3" A12





Radial Bead Accent 3" x 3" A14

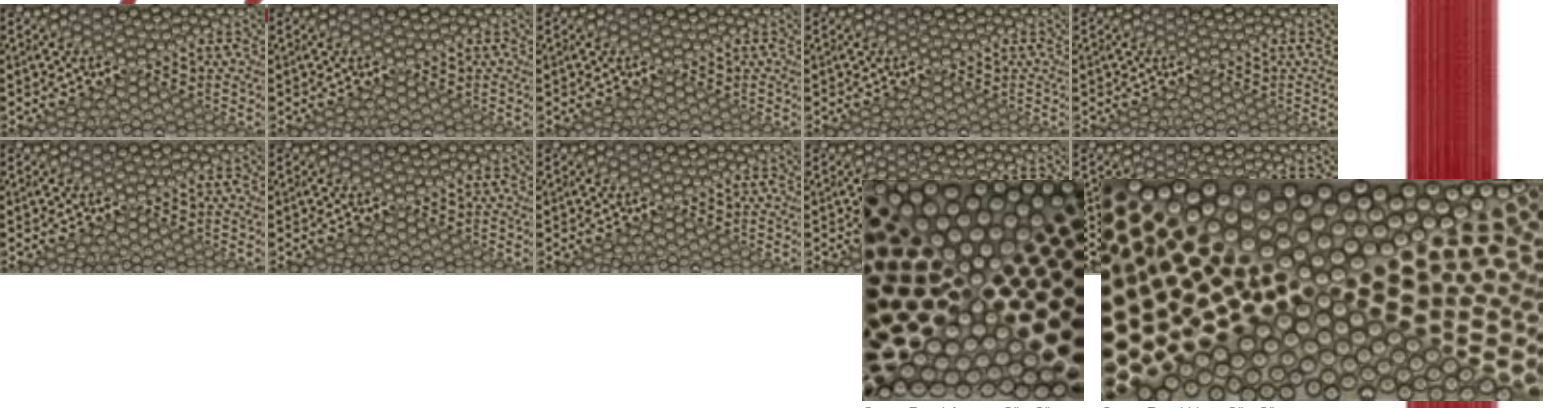
Radial Bead Liner 3" x 6" L116



Artist Series:  
**Naragon Collection**

Ditto Accent 3" x 3" A17

Ditto Liner 3" x 6" L118



Cross Bead Accent 3" x 3" A15

Cross Bead Liner 3" x 6" L117



Pixo Accent 3" x 3" A16

Hammered Field 3" x 3" FH3030

Minnow Accent 3" x 3" A9

**VARIATION & HANDCRAFTED CHARACTERISTICS**

Shape, texture, color, and size variation are inherent characteristics of handcrafted tile. Once properly installed, the beauty of this handcrafted tile is enhanced by such variation.

**INSPECTION & INSTALLATION**

Always inspect your tiles before they are installed, as installation constitutes an irrevocable acceptance of the product. Any questions as to acceptability must be resolved prior to installation.

We recommend that our tiles be laid out prior to installation to allow for blending of color range by an experienced crafts person. Because the purchase of Red Rock Tileworks for your home or commercial project represents a significant investment, proper installation is critical. To help ensure a successful installation please follow the guidelines provided by the Tile Council of America.

**COLOR & ADDITIONAL TILE SELECTIONS**

For color selections, trim, field, and decorative trims and moldings please reference our Prelude Collection Catalog and Color Selection Sheet.

All designs are copyright of Red Rock Tileworks ©2008

email: [sales@redrocktileworks.com](mailto:sales@redrocktileworks.com)

[www.redrocktileworks.com](http://www.redrocktileworks.com)

\*All tiles shown in C47 Twig Crackle

\*All Products may be ordered in any color

